



originals

CONTEMPORARY CLASSICAL ART

MARK CUMMINGS



originals

CONTEMPORARY CLASSICAL ART

PORTRAITS

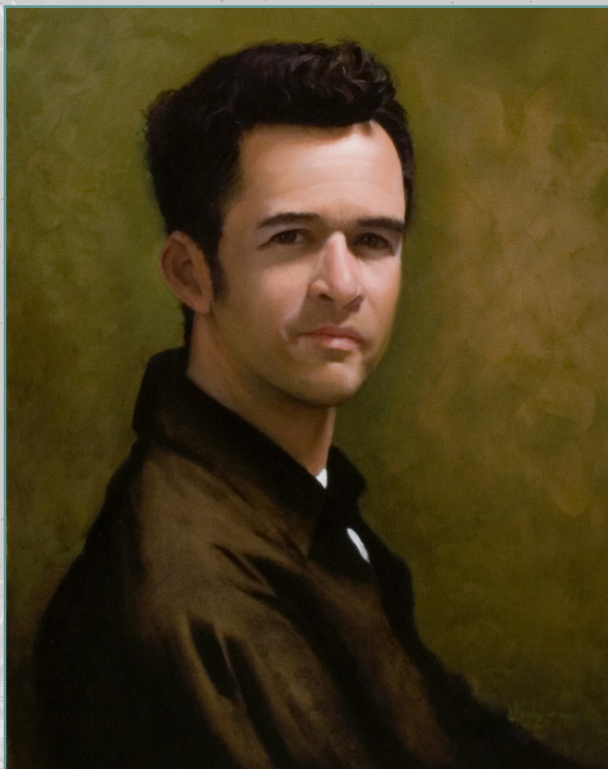
## COMPETITIONS & AWARDS

2009 SMITHSONIAN OUTWIN BOOCHEVER  
TRI-ANNUAL PORTRAIT COMPETITION –  
FINALIST

2008 HONORABLE MENTION AND JUROR'S  
CHOICE, ORANGE COUNTY FAIR

2007 SECOND PLACE WINNER PABST BLUE  
RIBBON ART COMPETITION

2007 FINALIST STILL LIFE CATEGORY – ART  
RENEWAL CENTER SALON



1930 PLACENTIA UNIT A2, COSTA MESA, CA  
92627 • PH: 949.735.8391

[WWW.MCORIGINALS.COM](http://WWW.MCORIGINALS.COM)

[WWW.CHALKPAINTING.COM](http://WWW.CHALKPAINTING.COM)

[MCORIGINALS@GMAIL.COM](mailto:MCORIGINALS@GMAIL.COM)

BROCHURE DESIGN 2009 OUTCROSS STUDIOS  
[WWW.OUTCROSS-STUDIOS.COM](http://WWW.OUTCROSS-STUDIOS.COM)





# CONTEMPORARY CLASSICAL PORTRAITS

Thank you for your interest in a classically painted portrait. It is my desire to create a painting that you will treasure for generations.

Everything starts with your dream. I want to come alongside of you, join you in dreaming, and discover the painting that can emerge from the process. During this discovery phase, we will establish details such as subject(s), setting, clothing choices, jewelry, and the like.

After we have cast the vision, my goal is to create a superior product in the budget you decide upon. This first meeting should take approximately one or two hours. The sitter is not required at this meeting, but it is beneficial.

Next, a contract detailing the stages and fees will be provided. If agreed upon, a 50% deposit will



be required to start working on the project (this initial deposit is non-refundable.)

Once the contract is signed and the initial deposit has been recieved, a photo session will be scheduled at the studio or at your location of choice. Please allow up to two hours for the photo session. A quick oil color study may be done during this photo session, depending upon the location.



After a pose has been decided upon, the painting process will begin. All portraits will have a dedicated website page where you can view the painting progress. The painting isn't finished until you are satisfied with the end product. Once the painting is finished and the remaining 50% of the cost has been received, the work can be delivered. Any shipping, framing, sales tax will be extra. There may be travel fees required, but any additional fees will be discussed before they are charged. If you require any assistance with framing, it can be happily offered.

## PORTRAIT RATES

Listed below are the basic prices for a simple solid color background. The cost may change based on criteria such as number of subjects, complexity of background, or other criteria.

- **CAMEO/HEAD STUDY**  
11" X 14" - 12" X 16" . . . . . \$1,000
- **HEAD AND SHOULDERS**  
12" X 16" - 16" X 20" . . . . . \$2,000
- **HALF-LENGTH  
(WITH HANDS)**  
18" X 24" - 20" X 30" . . . . . \$3,500
- **THREE-QUARTERS**  
30" X 36" - 38" X 48" . . . . . \$4,500
- **FULL-LENGTH**  
38" X 48" - 42" X 70" . . . . . \$6,000